



INSTRUCTION BULLETIN

No. 340881
Machine: M30
Published: 04-2008
Rev. 00

NOTE: DO NOT DISCARD the Parts List from the Instruction Bulletin. Place the Parts List in the appropriate place in the machine manual for future reference. Retaining the Parts List will make it easier to reorder individual parts and will save the cost of ordering an entire kit.

NOTE: Numbers in parenthesis () are reference numbers for parts listed in Bill of Materials.

Installation instructions for **kit number 9004120**

SYNOPSIS:

This kit contains the parts needed to replace a pressure sensor with a level sensor on M30 machines. Please follow step-by-step instructions.

SPECIAL TOOLS / CONSIDERATIONS: NONE

(Estimated time to complete: 1 hour)

PREPARATION:

1. Park the machine on a clean level surface, turn off the machine, engage the parking brake, and remove the key.

FOR SAFETY: Before leaving or servicing machine, stop on level surface, turn off machine, engage the parking brake, and remove key.

2. Empty the recovery tank. Refer to the Operators manual for instructions how to empty the recovery tank.
3. Disconnect the battery cables from the battery.



WARNING: Always disconnect battery cables from machine before working on electrical components.

4. Lock the recovery tank cover open.

INSTALLATION:

1. Disconnect the main wire harness from pressure switch. Refer to Fig. 1.
2. Remove the pressure switch and brass fitting from the recovery tank. Discard the pressure switch and fitting. Refer to Fig. 1.
3. Use the expandable plug (6) to plug the hole where the pressure switch was previously located and the sealing washer (7), hex screw (8), and hex nut (9) to plug the hole where the fitting was previous located. Refer to Fig. 1.

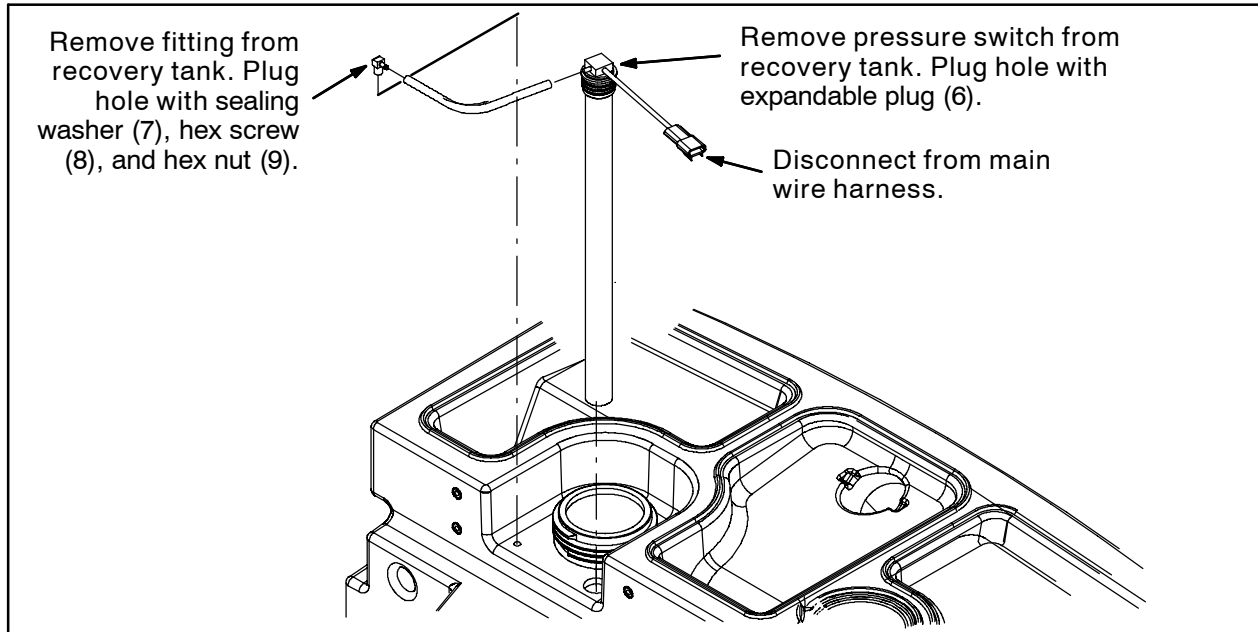


FIG. 1

4. Drill a 5/8" hole through the larger indentation in the recovery tank. Refer to (A) on Fig. 2 for location of indentation.
5. Remove/smooth all burrs and/or ridges from around the hole drilled in the previous step. Refer to Fig. 2.

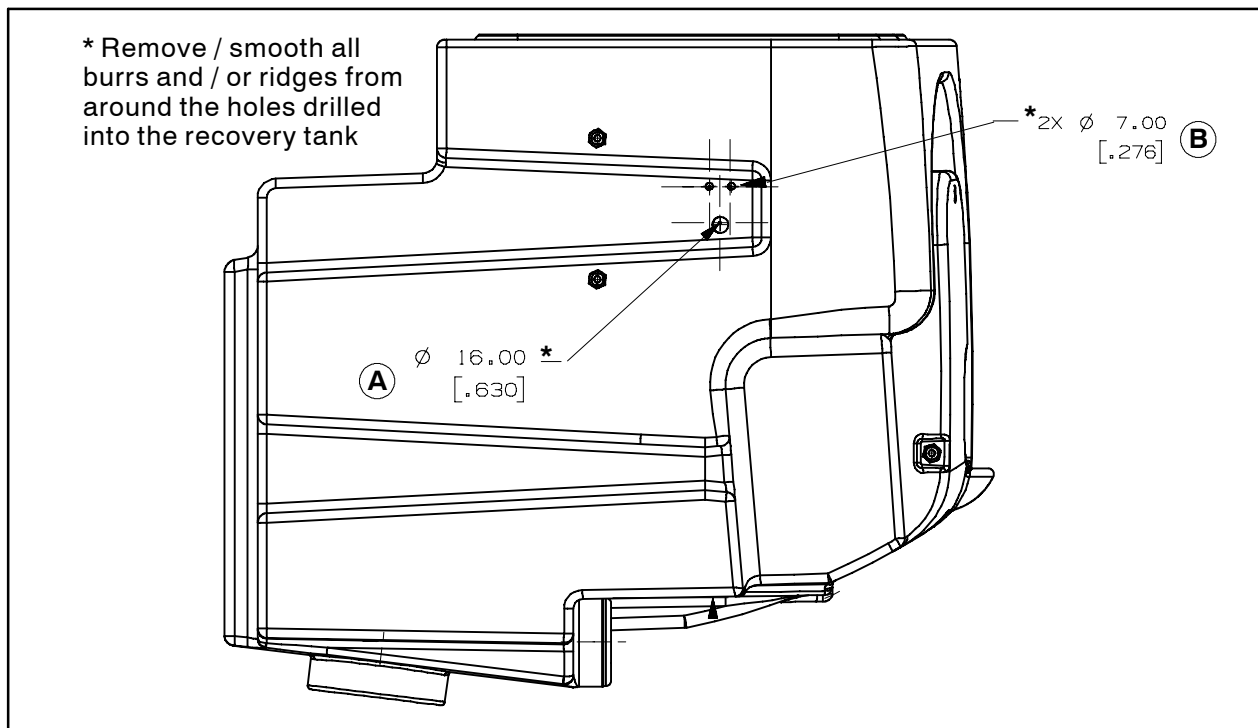


FIG. 2

6. Remove the plastic nut from the level sensor (1). Refer to Fig. 4.
7. Pull the level sensor (1) wires through the 5/8" hole in the recovery tank and insert the sensor into the hole. Refer to Fig. 2.
8. Install the level sensor (1) wires into the connector included with the sensor. Refer to Fig. 3.

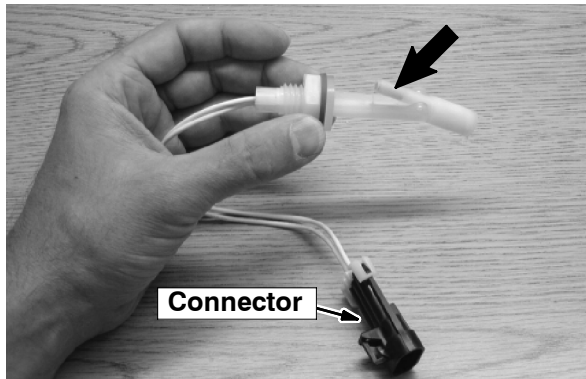


FIG. 3

9. Loosely tighten the nut onto the level sensor (1). Refer to Fig. 4.

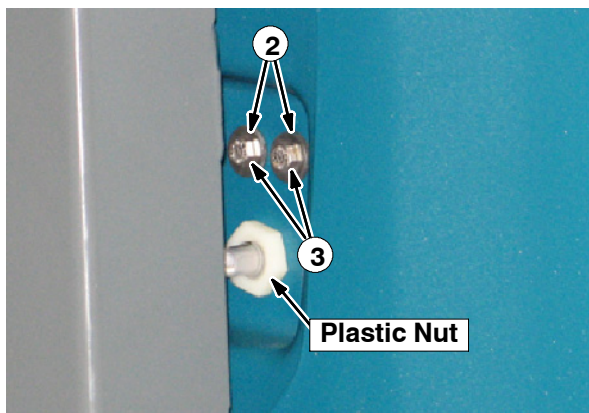


FIG. 4

10. Position the level sensor (1) inside the recovery tank so the float portion of the sensor is pointed up at 12:00. Refer to Fig. 3.
11. Tighten the nut to secure the level sensor (1) inside the recovery tank. Refer to Fig. 4.

12. Hold the float switch protector bracket (4) onto the recovery tank and drill a 17/64" hole through each hole in the bracket and through the recovery tank. Refer to (B) on Fig. 2 and Fig. 5. for locations of holes and how the bracket should be positioned over the sensor.
13. Remove/smooth all burrs and/or ridges from around the two holes drilled in the previous step. Refer to Fig. 2.
14. Use two hex screws (3), two sealing washers (2), and two hex nuts (5) to install the float switch protector bracket (4) into the recovery tank. Note location of sealing washers (1) **outside** the recovery tank. Refer to Fig. 4, Fig. 5, and Fig. 6.

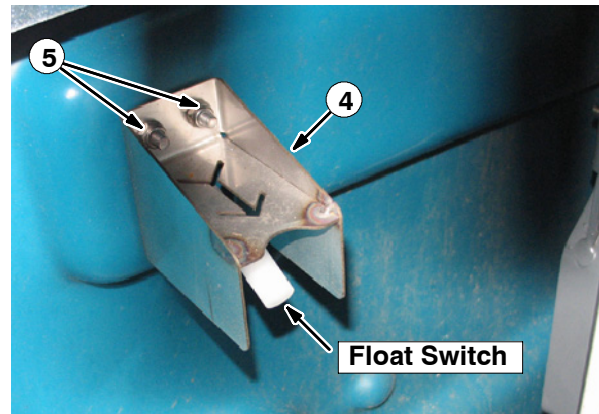


FIG. 5

15. Connect the main wire harness connector disconnected from the pressure sensor earlier in this bulletin to the level sensor (1).
16. Reconnect the battery cables to the battery
17. Start and use machine to scrub floors. Be sure the float switch operates when the recovery tank is full. The **F7: Rec Tank Full** fault indicator will show when the recovery tank is full if the sensor is working properly.

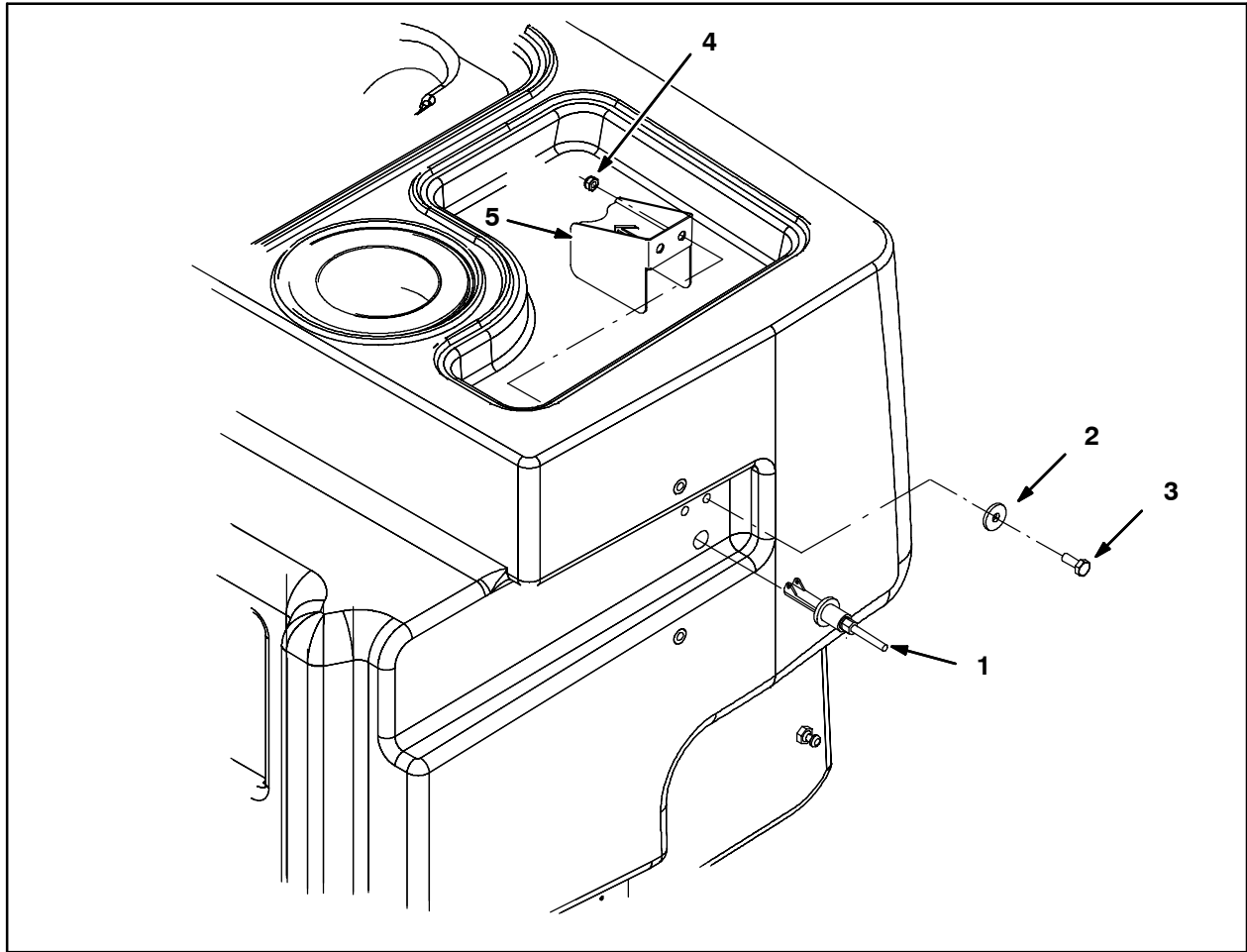


FIG. 6

Bill of Materials for Switch Kit, Level, Recvy Tank, CI - 9004120

Ref.	Tennant Part No.	Description	Qty.
▽	9004120	Switch Kit, Level, Recvy Tank, CI	1
▲	1 385685	Sensor, Level, Liq, 14VDC 01A .62-11	1
▲	2 76426	Washer, Sealing, 0.28B 0.75D SS, Neo	2
▲	3 09007	Screw, Hex, M6 X 1.0 X 25, SS	2
▲	4 1037816	Bracket, Protector, Float Switch	1
▲	5 08712	Nut, Hex, Lock, M6 X 1.00, SS, NL	2
▲	6 398850	Plug, Expandable, Rnd 1.500H 1.8L	1
▲	7 32087	Washer, Sealing, 0.33B 0.88D SS, Neo	1
▲	8 09740	Screw, Hex, M8 X 1.25 X 20, SS	1
▲	9 08713	Nut, Hex, Lock, M8 X 1.25, NL, SS	1

TENNANT COMPANY
P. O. Box 1452
Minneapolis, MN 55440-1452